

RECEIVED
LARAMIE COUNTY
CHEYENNE, WY.

CERTIFIED LAND CORNER RECORDATION

88 MAY 18 PM 4 19

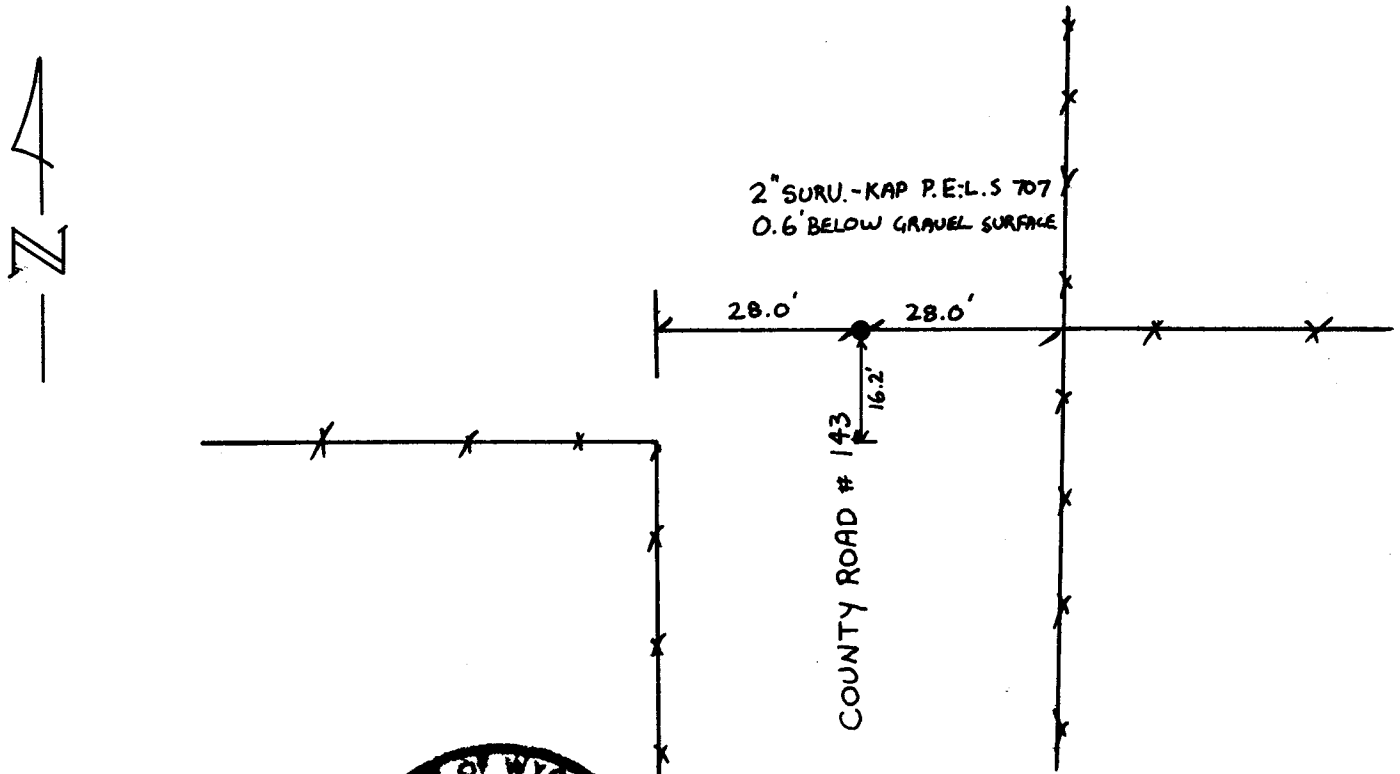
DESCRIPTION OF CORNER EVIDENCE FOUND, AND ORIGINAL RECORD (If known)



T. 14. N., R. 63. W., Laramie County, Wyoming. 2" surv-kap
P.E.-L.S. 707, 0.6' below gravel road surface.

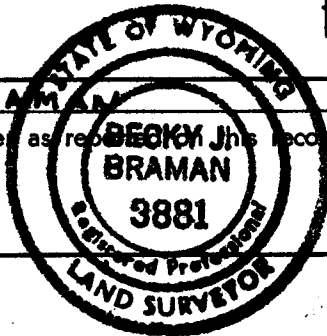
DESCRIPTION OF MONUMENT AND ACCESSORIES ESTABLISHED
TO PERPETUATE THE ORIGINAL LOCATION OF THIS CORNER:

SKETCH, WITH COURSE AND DISTANCE TO ADJACENT CORNER IF DETERMINED IN THIS SURVEY.
(May Sketch or Paste Reproduction on Reverse Side.)



Field work 5/4/88

I, Becky J. Braman certify that I have carefully performed or reviewed the work done on the diagrammed corner as reported on this recordation form and approve the same.



Becky J. Braman P.L.S. 3881
Signature of Surveyor Registration No.

STATE OF WYOMING,
Office of Clerk and Recorder,
County of _____

This "corner record" was filed for record on the 18th day of May, 1988, was noted on the cross-index plat and is assigned page No. _____, in book No. _____

Janet C. Whitehead
County Official

Cross Index No.	<u>E-5</u>	T.	<u>14 N</u>	R.	<u>63 W</u>	Mer.
		T.		R.		Mer.
		T.		R.		Mer.
		T.		R.		Mer.
		T.		R.		Mer.
		T.		R.		Mer.
		T.		R.		Mer.